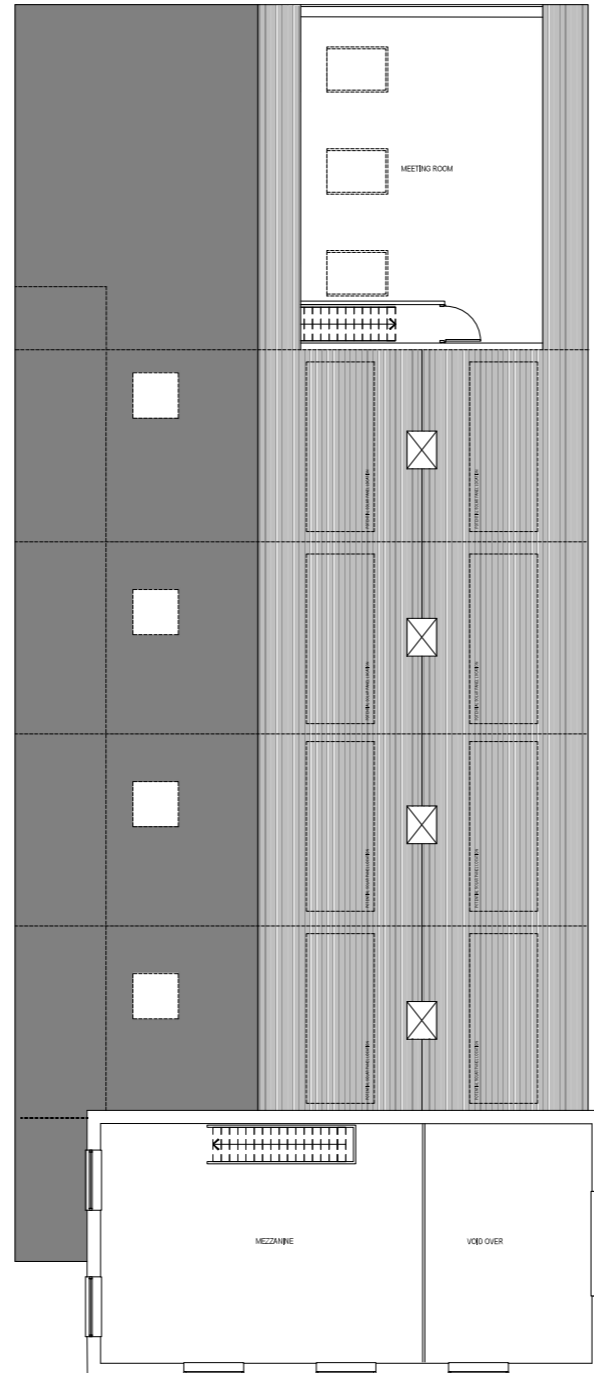
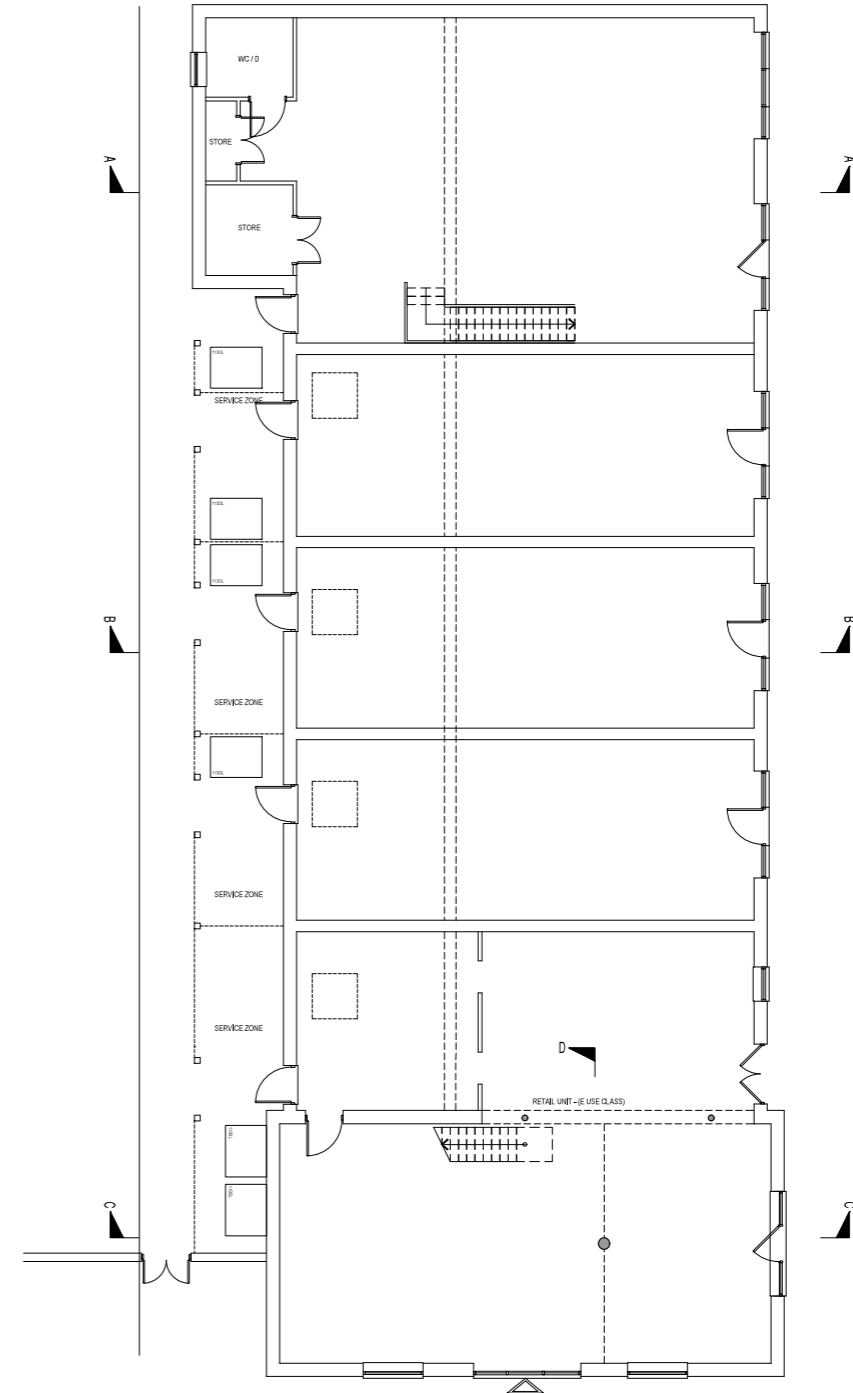


EASTERN BLOCK - ROOF PLAN



EASTERN BLOCK - FIRST FLOOR



EASTERN BLOCK - GROUND FLOOR

UNIT 5 - 175.7 M<sup>2</sup>  
VILLAGE HALL

UNIT 4 - 57.94 M<sup>2</sup>  
RETAIL UNIT

UNIT 3 - 57.94 M<sup>2</sup>  
RETAIL UNIT

UNIT 2 - 57.94 M<sup>2</sup>  
RETAIL UNIT

UNIT 1 - 198.65 M<sup>2</sup>

Rev	Description	Drawn	Date	Checked	Date
C	FIRST FLOOR WITH ROOF SPACE ADDED TO VILLAGE HALL	ST	13.11.24		
B	ALL INTERNAL LAYOUTS REMOVED. UNIT FOOTPRINTS REMAIN THE SAME	ST			
A	INTERNAL LAYOUTS REMOVED FROM UNITS 2,3 AND 4	--	----	--	----

PLANNING			
job / client			
WYNYARD SOUTH			
CAMERON HALL			
drawing title			
LOCAL CENTRE			
COMMERCIAL BLOCK (EAST) - FLOOR PLANS			
project no.	drawing no.	revision	date
CPT-320	PL-LC-05	C	07.01.24
scale	drawn by	sheet size	
1:100	ST/CD	A1	
320J Mycoral Way Team Valley Trading Estate Gateshead NE11 0RT	0191 - 4661611 info@cpt-group.co.uk		

